

2 Product description

2.3.2

Equipment specification



The symbols used below mean:
 "—" = not present
 "•" = present

Process equipment

| | |
|----------------------|--------|
| Designation | HRSS 5 |
| Serial number | 0224 |

2.3.3

Accelerated hydraulic hammer



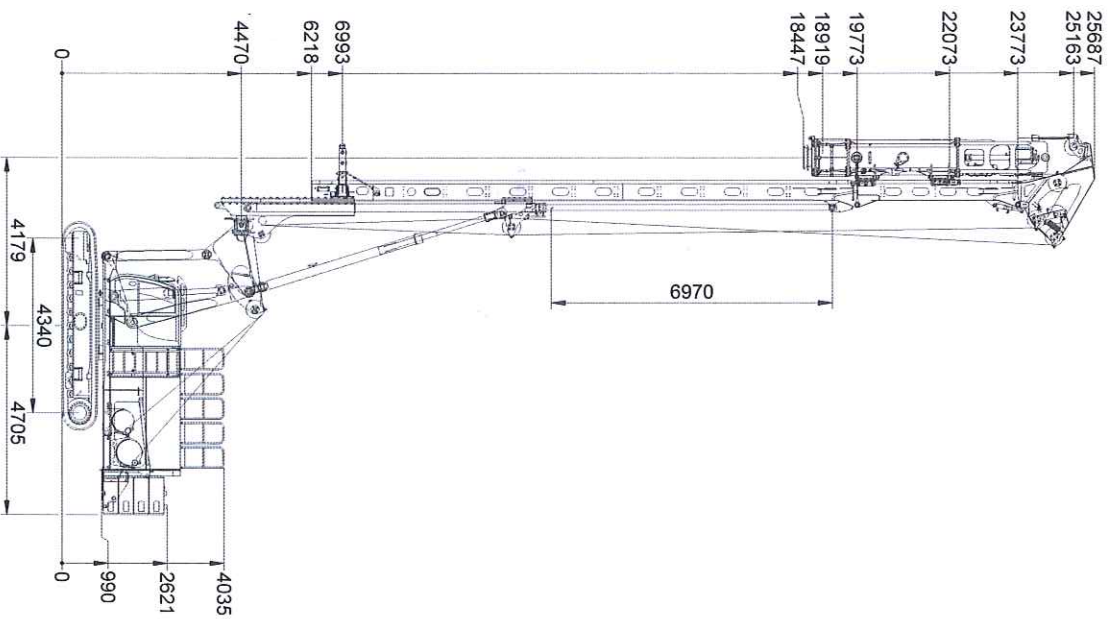
| Type | HRSS 4 | HRSS 5 | HRSS 6 |
|--|--------------------------|--------------|--------------|
| Maximum throw height | 1.2 | 1.2 | 1.2 |
| Minimum throw height | 0.1 | 0.1 | 0.1 |
| Maximum energy | 58 | 72 | 86 |
| Hits/minute | 50 - 150 | 50 - 150 | 50 - 150 |
| Piling weight | 4,000 | 5,000 | 6,000 |
| Total weight | 8,600 | 9,600 | 10,825 |
| Hydraulic system | | | |
| Operating pressure | 180 2,700 (psi) | 220 3,300 | 260 3,900 |
| Volume flow | 320 83 (l/min gpm) | 320 83 | 320 83 |
| Hydraulic power | 86 | 130 | 154 |
| Dimensions with HRS helmet | | | |
| Length (l) | 5,998 | 5,998 | 6,278 |
| Width (b) | 1,006 | 1,006 | 1,006 |
| Piledriving axis (h ₁) | 570 | 570 | 570 |
| Depth (h) | 1,193 | 1,193 | 1,193 |
| Electrical voltage 24 V DC 8 A (for all types) | | | |

2 Product description

2.3 2.3.1

Specifications Dimensions

Dimensions in [mm]



| Total weight [t] | Process equipment/tool | Characteristics |
|------------------|------------------------|-----------------|
| 73.0 | HRS5 | - |